

# Works Notice

March 2023

## Construction update Dutton Park station

On Saturday 1 April 2023, Dutton Park station will close to customers until late-2024 to allow major construction works to continue at the station. During the closure, trains will run express past Dutton Park station in both directions.

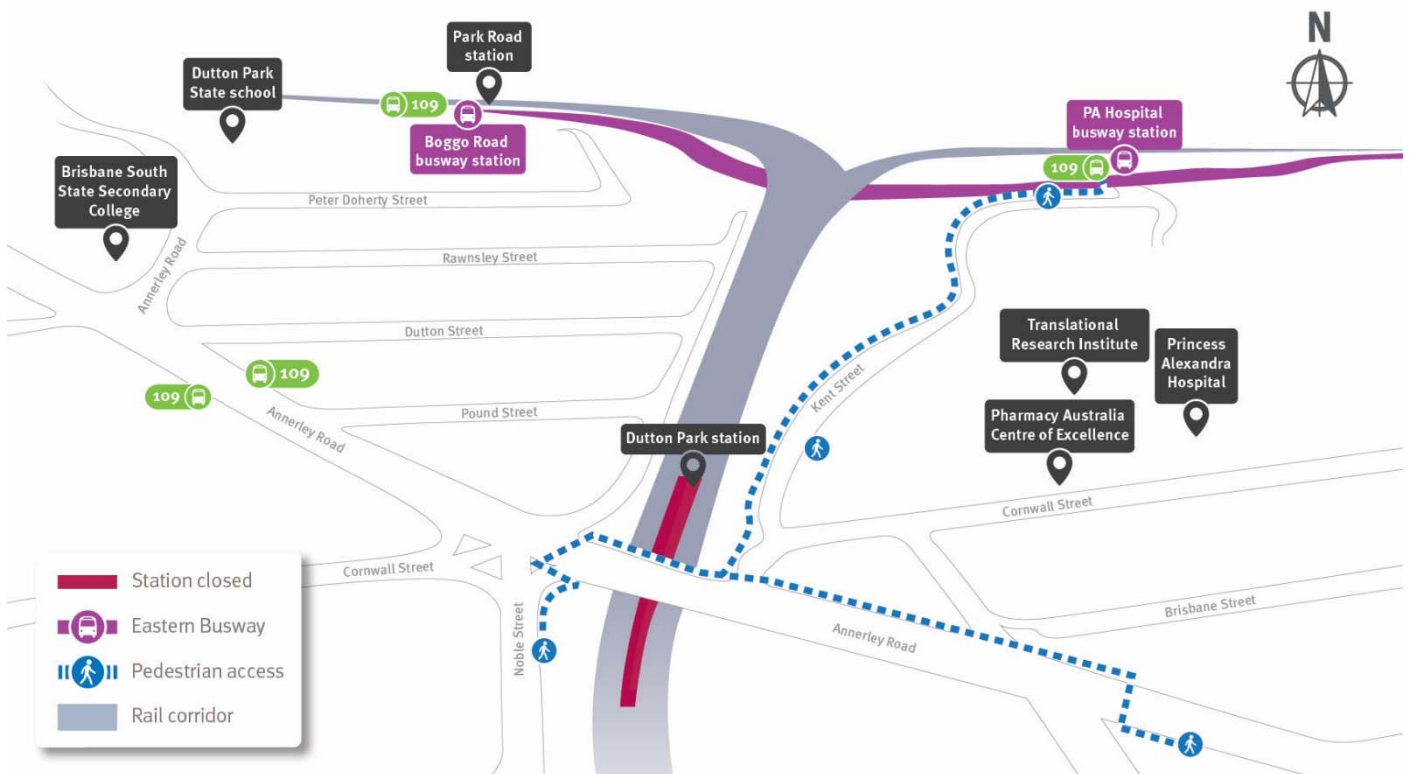
For more information on alternative transport options please plan your journey by downloading the MyTranslink app, visit [translink.com.au](https://translink.com.au) or call 13 12 30.

### Alternative travel options during the station closure:

Dutton Park station customers have plenty of alternative travel options available, depending on where you're travelling from. StationLink route 109 is a high frequency bus service which operates between Rocklea station and the PA hospital busway station. There are StationLink stops near Dutton Park station on Annerley Road, at the Boggo Road busway station or at the PA Hospital station. Customers can continue on the train and disembark at Park Road station.

There may be other local services that are better for you, so remember to plan ahead before you travel from 1 April 2023.

You can top up or buy a go card online at [translink.com.au](https://translink.com.au) or by calling 13 12 30. The easiest way to ensure you always have enough money to travel is to activate auto top-up, by linking your registered go card to your credit/debit card.



## Noise barrier construction

A noise wall is currently being built between Cope Street and Sampson Street to meet operational noise requirements. The noise wall is 130 metres long and ranges in height from 4.5 to 5.5 metres. Construction will occur in stages is planned to be complete by July 2023.

A noise wall is also being built along Fenton Street which is 50 metres long and ranges in height from 4.5 to 5.5 metres. Construction is planned to commence on these noise walls in March 2023.

## Details of works during March

The following activities are scheduled to occur between 6:30am and 6:30pm, Monday to Saturday from March 2023, weather and construction conditions permitting:

- Continue piling for a new retaining wall near Cope Street and the Annerley Road and Cornwall Street intersection
- Continue demolition of platform 1 at the existing Dutton Park station
- Construction of a shotcrete retaining wall within the rail corridor underneath the Wilkins Street pedestrian overpass
- Installation of concrete barriers along Noble Street to allow for construction of the new pedestrian overpass. These works will include the temporary closure of bus stop 13a (Noble Street at Princess Street) from Saturday 18 March 2023 until mid-2024
- Construction of a rail corridor maintenance access and noise barrier alterations at Fenton Street, Fairfield
- Continue construction of a noise barrier between Cope and Sampson streets.

## Out of hours work

The following activities will occur outside the project's normal working hours, weather and construction conditions permitting:

Location	Date and hours of work	Type of work
Between Dutton Park and Fairfield stations	Intermittently between 6:00pm and 6:00am throughout March 2023	<ul style="list-style-type: none"><li>• Occasional out of hours equipment and materials deliveries to site</li><li>• Installation of barriers, signage and line marking changes on Noble Street</li><li>• Service identification using a vacuum truck along footpaths around the station precinct.</li></ul>
	Track closure between 12:00pm Saturday 11 to 3:00am Monday 13 March 2023	<p><b>Day shift</b></p> <ul style="list-style-type: none"><li>• Piling for retaining wall construction near Kent Street including concrete deliveries and pours</li><li>• Construction of a shotcrete retaining wall within the rail corridor underneath the Wilkins Street pedestrian overpass</li><li>• New platform 1 construction and drainage works</li></ul> <p><b>Day and night shift</b></p> <ul style="list-style-type: none"><li>• Installation of overhead electrical structures, signalling equipment, cable routes and pits within the rail corridor</li><li>• Cable service route installation in proximity to Kent Street, Fenton Street and Ensign Avenue</li><li>• Earthworks to support signalling installation and under track crossings</li><li>• Rail deliveries, track work and maintenance.</li></ul>

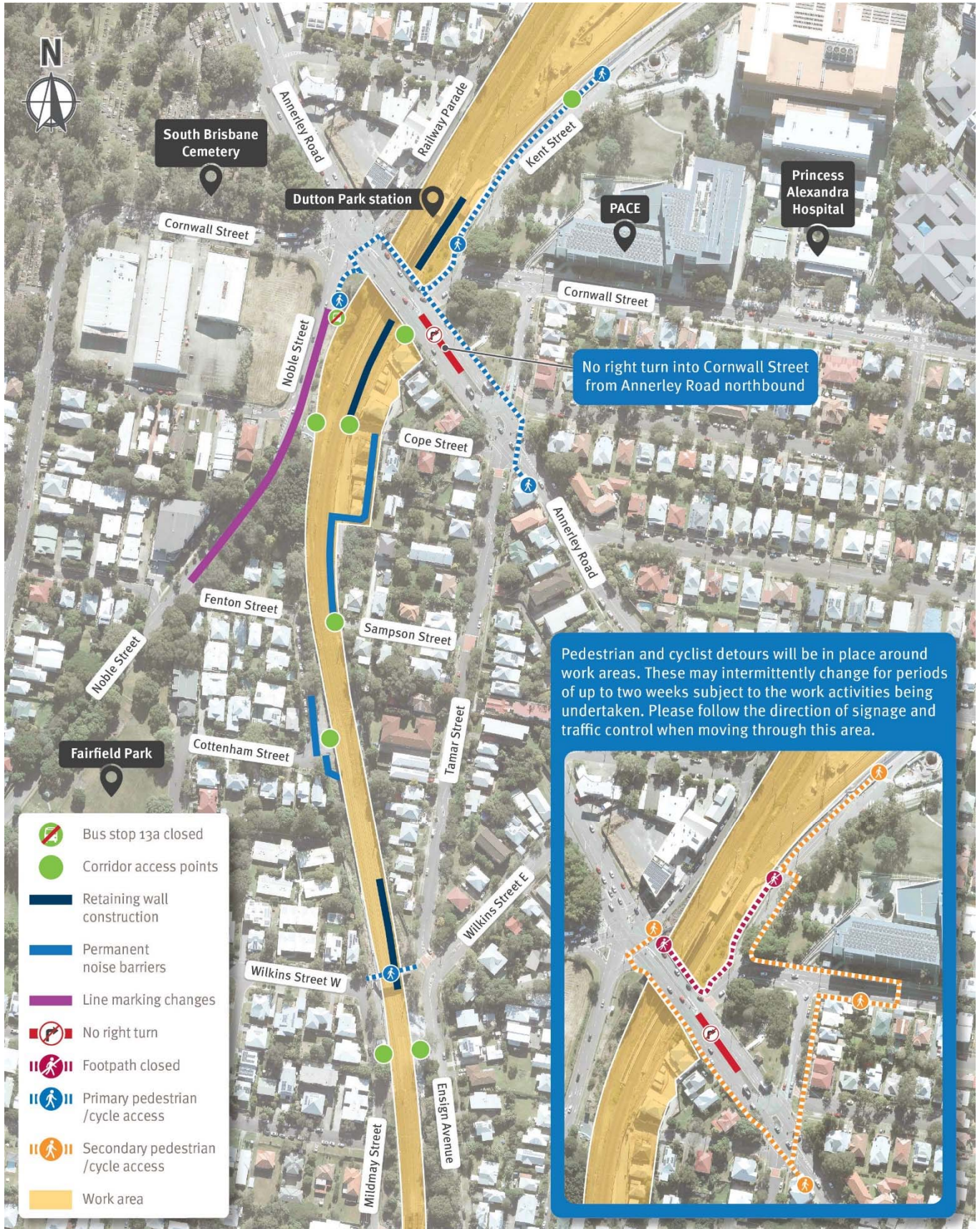
## What to expect

During these works you will notice some intermittent disruptions such as:

- Access into the rail corridor intermittently during March via Annerley Road, Cope Street, Fenton Street, Noble Street, Kent Street, Sampson Street, Mildmay Street and Ensign Avenue. During planned track closures traffic management will be set up on these streets. Please follow the direction of traffic control and signage and allow for extra time to travel
- Increased noise, vibration and dust associated with the use of heavy machinery and equipment
- Trucks and machinery including concrete trucks and pumps, frontend loaders, excavators with rock breakers, vacuum trucks, piling rig, mobile cranes, small power tools, minor vibrating equipment and mobile lighting towers to light work areas at night.



## Rail corridor access points, traffic changes and pedestrian detours



We appreciate your patience during construction and will continue to update you as work progresses.